

STUDENTS WITH DISABILITIES (DISCLOSED)

AS AT 13 MARCH 2018

356
2017

Approximately **1.95%** of **26 484** total students have disclosed their disabilities for 2018

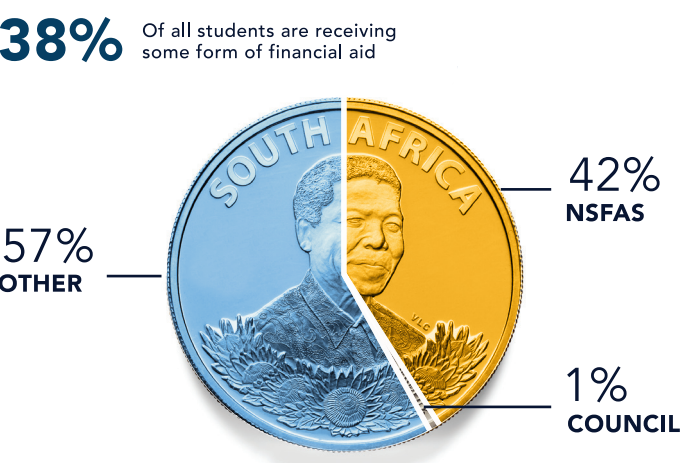
DEMOGRAPHIC PROFILE:
The largest grouping represented by Black students (255 or 49.5%) followed by White students (205 or 39.8%) of total students with disabilities

DISABILITY CATEGORIES:
Majority have specific learning difficulties followed by mobility impairments

FACULTIES:
The largest proportion of students with disabilities is in the Faculty of Business and Economic Sciences (143 or 28%) followed by EBEIT (107 or 21%).

515
2018

STUDENTS RECEIVING FINANCIAL AID



STUDENT TRANSPORT

53 TAXIS

16 SHUTTLE BUSES

265
TRIPS PER DAY BY TAXI

101
TRIPS PER DAY BY BUS

3 975
STUDENTS TRANSPORTED BY TAXI

7 272
STUDENTS TRANSPORTED BY BUS

+
Number of trips/frequency increased to cater for growing demand and 1 additional bus

WIFI & PC ACCESS

STUDENTS ACCESSING WIFI ON CAMPUS:
25 602
STUDENTS LOGGED INTO WIFI THIS YEAR

STUDENT : PC RATIO ON CAMPUS:

MISSIONVALE
480
1 800
1 : 3.75

GEORGE
250
1 459
1 : 5.84

2ND AVE
374
5 010
1 : 13.39

NORTH
1035
6 128
1 : 5.92

SOUTH
1501
12 326
1 : 8.21

Bird Street campus and Sanlam Student Village have 43 and 24 PCs accessible to students, respectively

123 OUT OF 132
Across the campuses, teaching labs make up the majority of labs (123 out of 132), with 9 general computer labs across all campuses.

STUDENT ACCOMMODATION: 2017-2018

	ON-CAMPUS BEDS:			ACCREDITED OFF-CAMPUS BEDS:		
	GEORGE CAMPUS	PORT ELIZABETH CAMPUS	TOTAL:	GEORGE OFF-CAMPUS	PORT ELIZABETH OFF-CAMPUS	TOTAL:
2017	421	2 850	3 271	248	4 445	4 693
2018	421	2 849	3 270	309	6 337	6 646

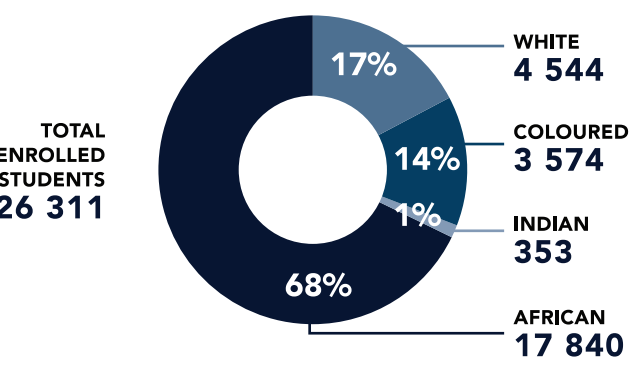


Q1 2018

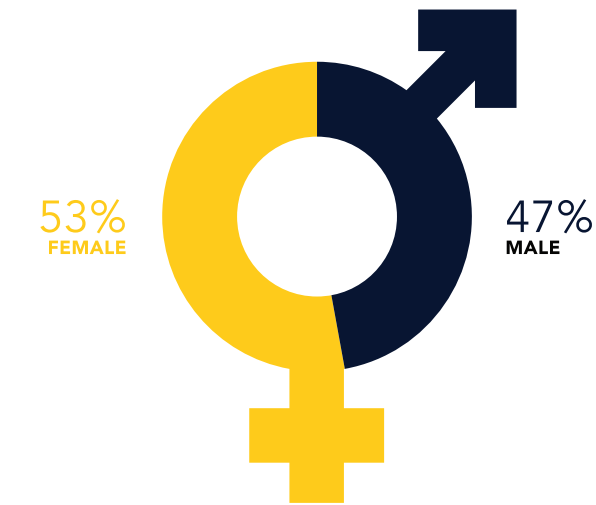
Student access and enrolments at a glance: 2018
Produced by the Office for Institutional Planning

STUDENT HEADCOUNT

AS AT 15 MARCH 2018



GENDER DISTRIBUTION



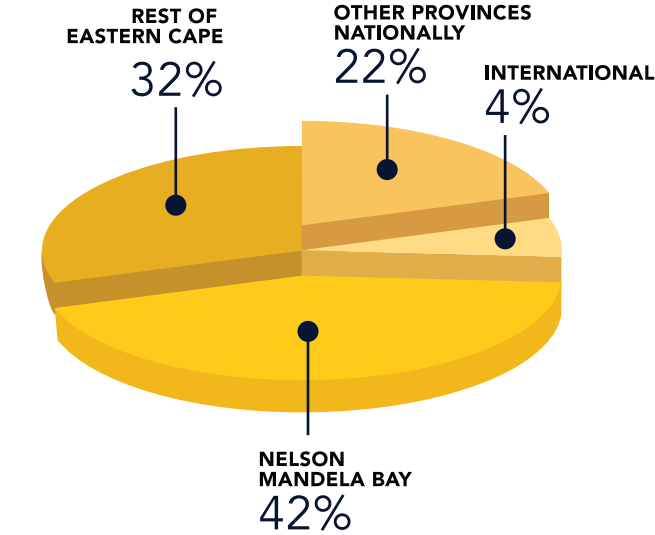
FIRST-TIME ENTERING UNDERGRADUATE APPLICATIONS, ADMISSIONS AND REGISTRATION RATIOS 2018

	ARTS	BUSINESS & ECONOMIC SCIENCES	EDUCATION	ENGINEERING, BUILT ENVIRO & IT	HEALTH SCIENCES	LAW	SCIENCE	NELSON MANDELA UNIVERSITY
*APPLICATIONS	10 233	20 202	10 270	8 799	22 897	4 747	8 165	85 313
APPLICANTS	4 797	9 751	6 226	4 795	11 366	459	4 286	41 680
**ADMISSION: APPLICATIONS RATIO	19.4%	16.0%	7.1%	23.9%	6.5%	9.7%	17.2%	13.4%
***ADMISSION: APPLICANTS RATIO	41.3%	33.2%	11.7%	43.9%	13.2%	17.3%	32.7%	26.0%
****REGISTRATION: ADMISSIONS RATIO	64.5%	54.5%	56.9%	52.7%	51.0%	53.2%	46.9%	54.6%

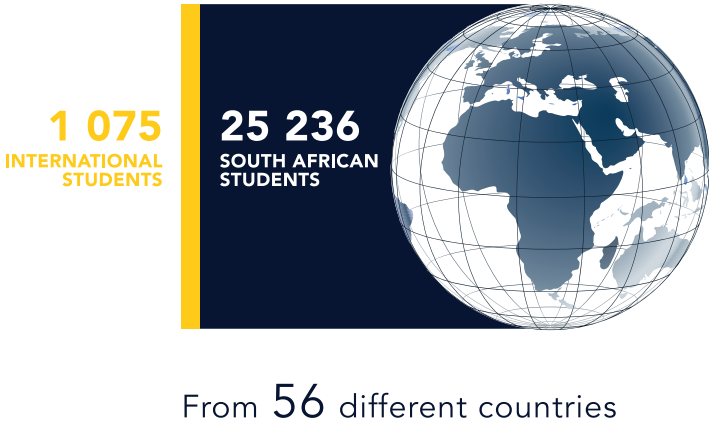
* Applicants may apply for admission to more than one qualification, therefore the number is much higher than the number of applicants.
** The admission: applications ratio is the percentage of the total number of applications made by students (which could be for more than one qualification by each student) that were approved for admission to qualifications.
*** The admission: applicants ratio is the percentage of actual students that were admitted to qualifications.
**** The registration: admissions ratio is the percentage of students that were admitted who finally registered at the University.

STUDENTS BY GEOGRAPHICAL ORIGIN

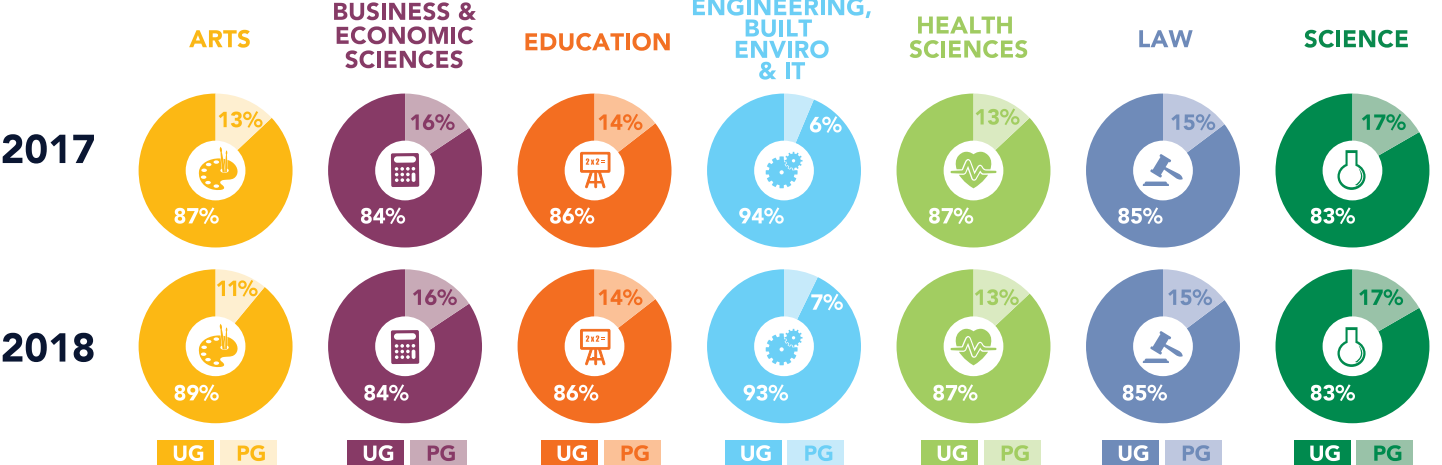
AS AT 15 MARCH 2018



SA AND INTERNATIONAL ENROLMENTS

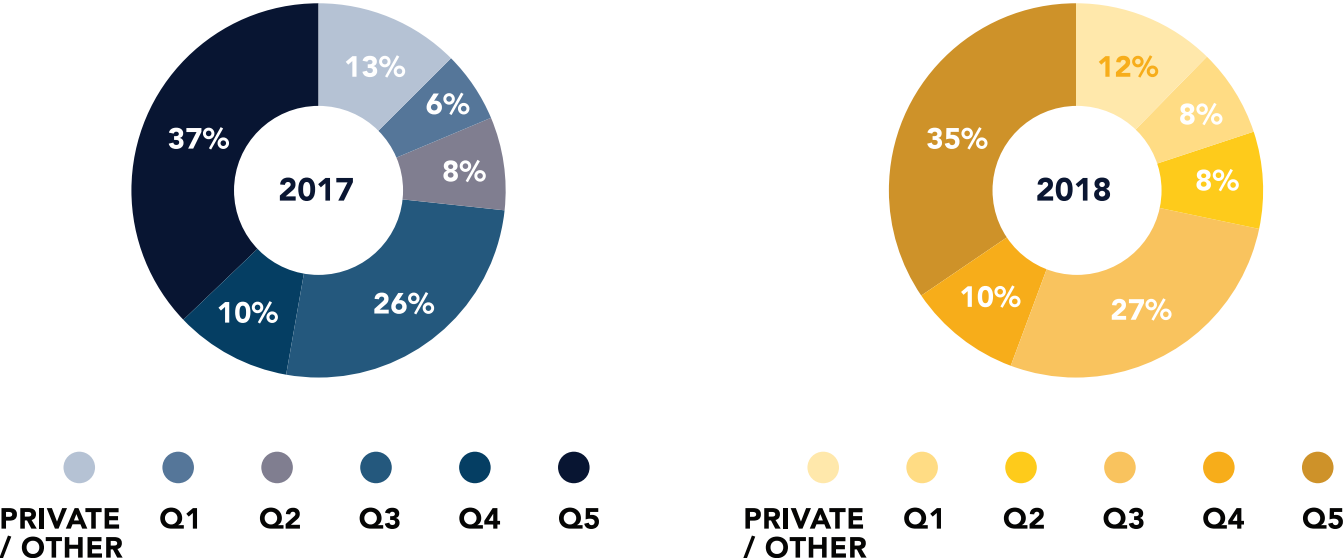


UNDER- AND POSTGRADUATE STUDENT ENROLMENTS



HIGH SCHOOL QUINTILE PROFILE

(EXCLUDING INTERNATIONAL STUDENTS)



STUDENT ENROLMENTS BY UNDERGRADUATE QUALIFICATION TYPE

	ARTS	BUSINESS & ECONOMIC SCIENCES	EDUCATION	ENGINEERING, BUILT ENVIRO & IT	HEALTH SCIENCES	LAW	SCIENCE	TOTAL
CERT/DIPL	902	4 710	0	2 548	367	122	1 086	9 735
DEGREES	2 520	2 346	1 640	1 751	2 720	866	1 115	12 958
% GROWTH	20.5%	-0.4%	11.3%	9.6%	4.4%	1.1%	4.3%	6.2%

DISTRIBUTION OF UNDERGRADUATE ENROLMENTS BY QUALIFICATION TYPE

