



**Nelson Mandela  
Metropolitan  
University**

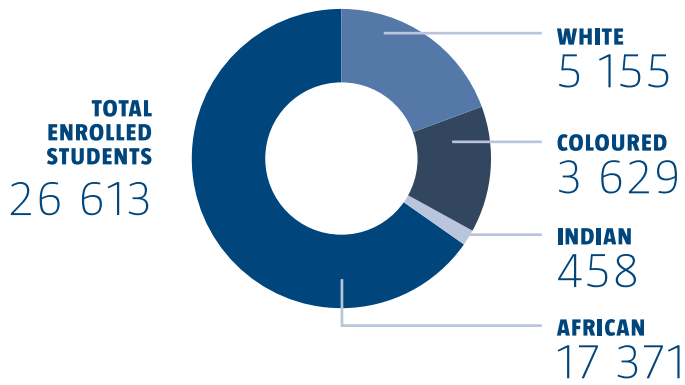
[www.nmmu.ac.za](http://www.nmmu.ac.za)

# **ENROLMENTS AT A GLANCE 2016 / 2017**

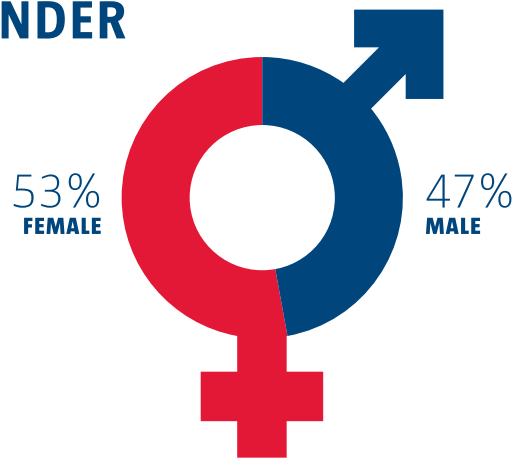
Produced by the Office for Institutional Planning

## STUDENT HEADCOUNT

AS AT 31 MARCH 2017



## GENDER

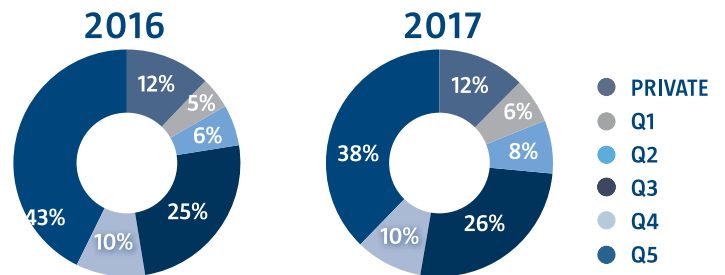


## SA/INTERNATIONAL



## HIGH SCHOOL QUINTILE PROFILE

(EXCLUDING INTERNATIONAL STUDENTS)



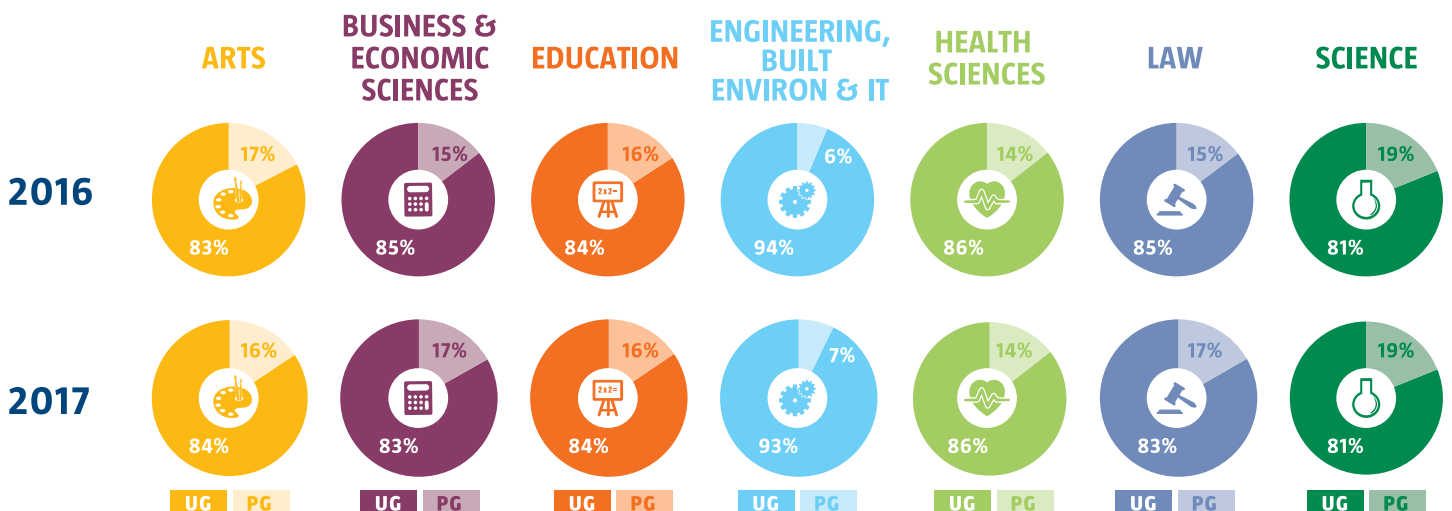
## FACULTY

FIRST TIME UG APPLICATIONS, ADMISSIONS\* AND REGISTRATIONS\*\* RATIO - 2017

	ARTS	BUSINESS & ECONOMIC SCIENCES	EDUCATION	ENGINEERING, BUILT ENVIRON & IT	HEALTH SCIENCES	LAW	SCIENCE
APPLICATIONS	7 785	19 069	8 352	7 915	15 112	3 995	7 744
ADMISSION RATIO	21.1%	15.3%	8.6%	27%	9.8%	10.3%	17.7%
REGISTRATION RATIO	59.2%	45.4%	44%	45.1%	43.6%	47.7%	39.6%

\*admissions/applications ratio | \*\*registrations/admissions ratio

## ENROLLED STUDENTS UG & PG



## UG QUALIFICATION TYPES - 2017

	ARTS	BUSINESS & ECONOMIC SCIENCES	EDUCATION	ENGINEERING, BUILT ENVIRON & IT	HEALTH SCIENCES	LAW	SCIENCE
CERT/DIPL	879	4 484	0	2 775	416	77	1 134
DEGREES	2 139	3 053	1 530	1 365	2 668	947	1 097
% GROWTH	8.64%	-6.21%	-0.71%	5.53%	0.85%	-7.83%	3.00%

## DISABILITY (DISCLOSED)

390  
2016

Approximately 1.5% students have disclosed their disabilities

Demographic Profile:  
Majority are African males

356  
2017

Disability Categories:  
Majority have specific learning difficulties followed by mobility impairments

Faculties:  
The majority are enrolled at the Faculty of Business and Economic Sciences, the Faculty of Engineering, the Built Environment and IT and then the Faculty of Science.

## FINANCIAL AID - 2016

49.3% of student headcount received financial aid



## TRANSPORT



53 TAXIS



15 SHUTTLE BUSES

182  
TRIPS PER DAY

40  
TERM DAYS

312 000  
TOTAL STUDENTS  
TRANSPORTED

7 280  
TRIPS IN TERM 1

7 800  
PASSENGERS PER DAY

## WIFI & PC ACCESS

STUDENTS ACCESSING WIFI  
ON CAMPUS

20 728

Students logged into Wifi this year

25,28 %

of students are not accessing Wifi,  
since most of them do  
not possess mobile devices.

Across the campuses, teaching  
labs make up the majority of labs  
(123 out of 132), with 9 general  
computer labs across all campuses.

STUDENT : PC RATIO ON CAMPUS

MISSIONVALE  
480 1 800  
1 : 3,75

GEORGE  
250 1 459  
1 : 5,84

NORTH  
1035 6 128  
1 : 5,92

SOUTH  
1501 12 326  
1 : 8,21

2ND AVE  
374 5 010  
1 : 13,39

Bird Street campus  
and Sanlam Student  
Village have 43 and  
24 PCs accessible to  
students, respectively

## RESIDENCES - 2017



GEORGE  
CAMPUS



SUMMERSTRAND  
CAMPUS SOUTH



SUMMERSTRAND  
CAMPUS NORTH



SECOND AVENUE  
CAMPUS



OFF CAMPUS (accredited)  
(incl. 210 beds in George)

### BEDS AVAILABLE ACCOMMODATION PER CAMPUS

459

1 458

1 280

172

4 410

### ENROLLED STUDENTS PER RESIDENCE

415

1 434

1 266

170

4 410

# Values

To continue to thrive as a dynamic African university over the next 10 years and beyond, we must prepare for whatever is to come. Just as our six core values have underscored all that we have achieved, so they will continue to serve as a moral compass as we move into the future.

We believe that by embracing and living these values, our staff and students are better prepared for facing their own personal tomorrow.

## Taking responsibility

With freedom and rights come responsibilities. Staff and students are encouraged to not only take responsibility for themselves but for those around them as part of a drive towards social justice and civic-mindedness.



## Respect for diversity

Diversity means understanding that we are all different and that we respect each other's differences. This diversity can and does enrich our lives.



## Excellence

"We are what we repeatedly do. Excellence, then, is not an act, but a habit," Aristotle once said. This is what we strive to do at NMMU – unlock doors to personal and institutional excellence.



## Respect for the Natural Environment

At NMMU we live and study in a nature reserve on the coast. This privilege must be preserved for generations to come as we strive towards creating a sustainable tomorrow through conservation efforts in the world today.



## Integrity

Integrity is doing the right thing, even if nobody is watching. It's about having the courage to say no; being honest and having the moral fibre to face the truth regardless of circumstances.



## Ubuntu

Respect, compassion and care for one another forms part of the African philosophy of *ubuntu*. At NMMU, we are passionate about our service to society.

